



Contained use

In order to determine which procedure is applicable you first need to conduct a risk assessment. In doing so you'll determine which containment level is applicable for your activities with GMOs and thereby also which procedure.



[How to conduct a risk assessment](#) >

Below you will find an overview of the different procedures. More information about these procedures is available on the GMO Office website, however this information is only available in Dutch.

My organism is not listed on the Annex

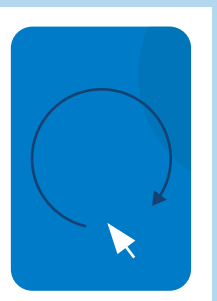
If you would like to use an organism or virus that isn't listed in annex 2, 4, 7 or 11 of the Regeling ggo, you can submit a **2.13(a) verzoek** to have it placed on the appropriate annex.



Confirm the outcome of my risk assessment

You can submit a **2.8 permit** request, if:

- You wish to deviate from the risk assessment according to annex 5, for example because you believe that the GMO experiments can be performed safely within lower containment level.
- You cannot conduct a risk assessment according to annex 5 and have conducted one following annex 8.
- Your outcome of the risk assessment according to annex 5 is unclear, and you are doubting between two levels of containment.



With my risk assessment I know the containment level and the procedures I need to follow



Containment level I or II

For activities with GMOs that need to be handled within containment level I or II you must submit a **notification**.



Containment level III

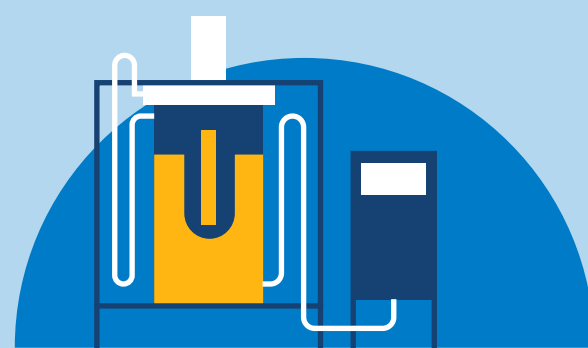
For activities with GMOs that need to be handled within containment level III you must submit a **permit request**.

Procedures for schools



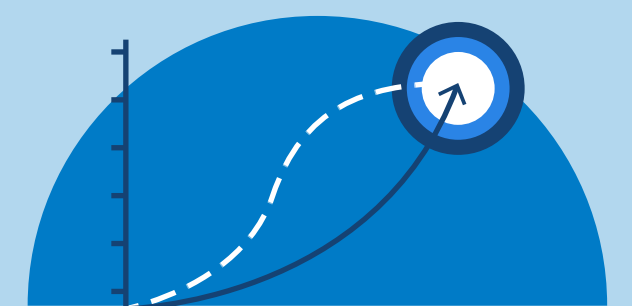
If you want to perform activities with predefined safe GMOs on a small scale within a school setting, you can use the special **school procedure**. This has the advantage that you do not require a WABO (environmental permit).

Procedures for large scale production



If you want to culture GMOs in a bioreactor larger than 100 litre, then you can use the procedures intended for **large scale production**.

ATV procedure



If you want to perform specific activities with GMOs where you cannot adhere to the standard containment and work regulations according to Annex 9, you can suggest alternative measures to safely perform the activities via an **ATV procedure**.